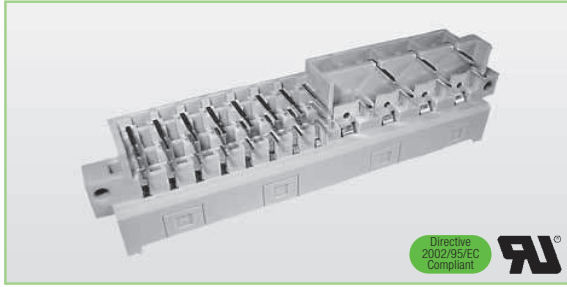


DIN 41612

2E Syscom Inc. - 86 Kendall Avenue - Framingham, MA 01720
 Tel. 508 620 1678 - www.2esyscom.com - e mail 2e@2esyscom.com

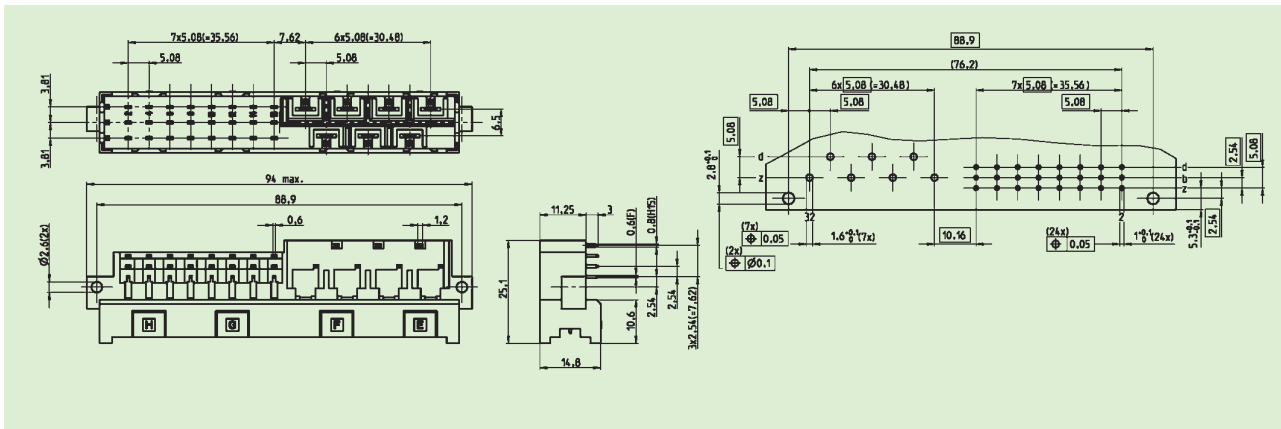
IEC 60603-2

F24H7



- Bauform F24H7 in Ergänzung an die DIN 41612
Type F24H7 in addition to DIN 41612
- Mit integrierter Kodierung
With integrated coding device
- Vergoldete Kontaktzone im F-Teil
Gold-plated mating area part F

Polzahl/no of contacts		24 + 7 (z + b + d)		
Voreilung/extended pin		z32		
F-Teil/H-Teil/part F/part H		Gütek./mating class		Zubehör/Accessories
90°/90° Tauchlöt, Raster 5,08 mm 90°/90° solder pin, grid 5.08 mm		F: 2 (Au/Sn) H: Ag 06 Mm24w+6/1w2 Order-No. 0619172		Order-No. 0401115600C99



Technische Daten Seite 16 und 17.
 Technical specifications page 16 and 17.

